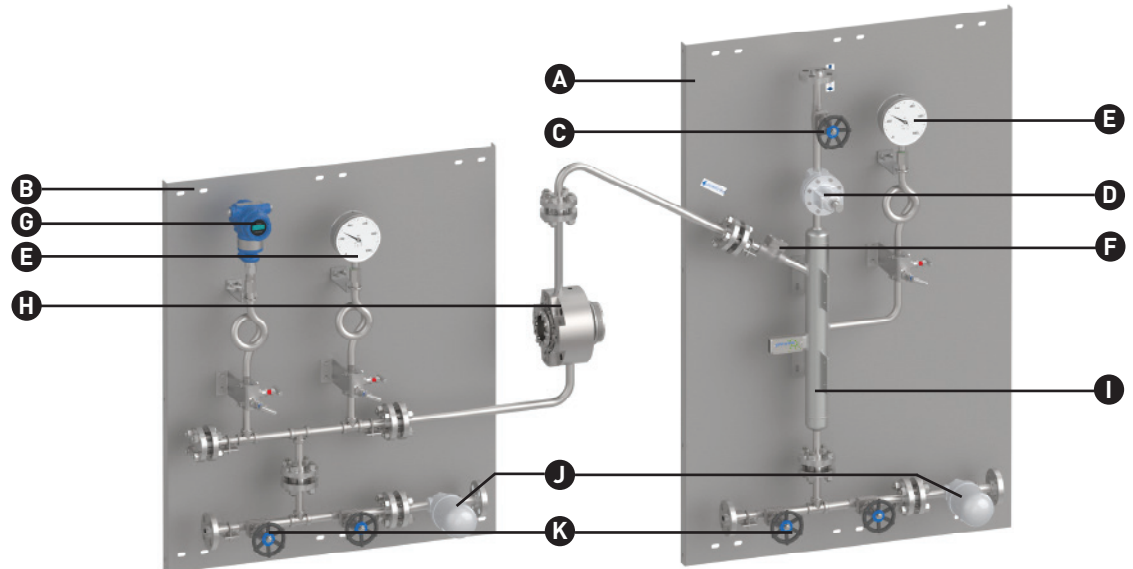


- A – Upstream panel
- B – Downstream panel
- C – Isolation valve
- D – Pressure regulator
- E – Pressure gauge
- F – Check valve
- G – Pressure indicating transmitter
- H – Mechanical seal
- I – Separation chamber
- J – Steam trap
- K – Drain valve



Product Description

GS 74-Steam utilizes an external source to provide a clean pressurized steam barrier to a dual pressurized mechanical seal with minimal leakage across the primary sealing interface into the process stream. The GS 74-Steam global standard system is a pre-engineered design to provide a best-practice solution to the overly complex design process between supplier and customer significantly reducing specification and delivery timescales.

Performance Capabilities

- Temperature: -20° to 215°C/-4° to 420°F (design)
-20° to 65°C/-4° to 149°F (ambient)
- Pressure: 0 to 20 bar/0 to 290 psi (design)
0 to 18 bar/0 to 260 psi (operation)
- Footprint: L x W x H: 890 mm x 310 mm x 1,400 mm/
35" x 12.2" x 55.1" (upstream)
L x W x H: 890 mm x 310 mm x 1,040 mm/
35" x 12.2" x 41" (downstream)

Design Features

- Best practice design to deliver clean and dry barrier steam for optimal mechanical seal performance and centrifugal pump up time
- Assured correct differential pressure supplied to the mechanical seal
- Safeguards against the toughest environments and provides full containment of VOCs for zero-emission control
- Streamlined design to minimize footprint and obstruction
- Design modularity and specified component flexibility

- Quick delivery with lead times to meet or exceed your needs
- Steam separator and steam traps to remove condensate from the steam supply and seal cavity
- Instruments are protected against the high steam temperatures

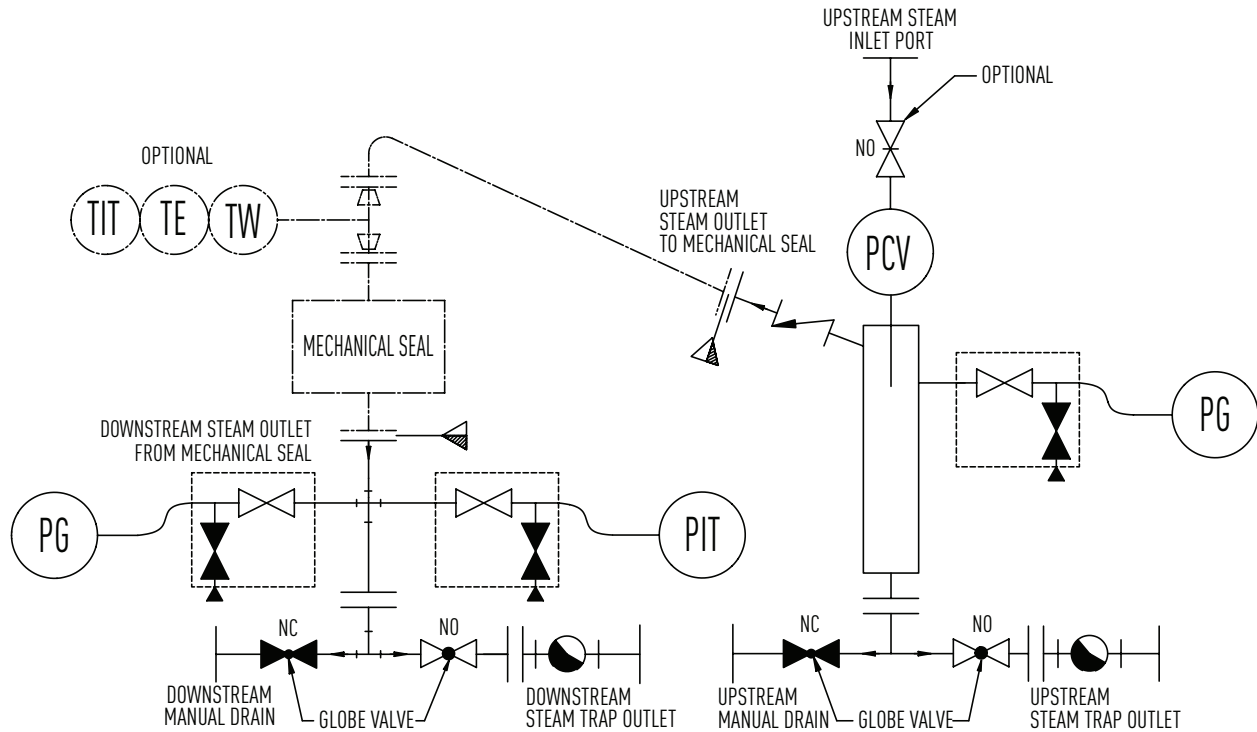
The GS 74-Steam global standardized Plan 74-Steam seal support system is a pre-engineered design that is already certified for regional qualifications. By providing clear component description and simplified selection criteria, customers receive an improved and faster process of doing business. The GS 74-Steam is designed to deliver high reliability with long-term low cost of ownership.

Materials of Construction and Component Details

Seal Components	Materials/Description
Panel assembly	Panel: 316 SS Tube and fittings: 316 SS Steam separator: 316 SS
Pressure indicating transmitter	316L wetted parts 4-20mA signal, HART protocol or Foundation Fieldbus Rated for explosive atmosphere zones*
Pressure gauge	316 SS
Steam traps	316 SS Thermodynamic steam trap
Check valve	316 SS
Gate valves	316 SS
Pressure regulator	316 SS

*Region specific

GS 74-Steam Typical Arrangement



Options

Component	Alternate Option
Panel	With protective enclosure (304 SS)
Pressure indicating transmitter	Pressure switch
Temperature measurement	Add a temperature indicating transmitter (supplied loose)
Isolation	Add an isolating valve



North America
United States of America
Tel: 1-847-967-2400

Europe
United Kingdom
Tel: 44-1753-224000

Latin America
Brazil
Tel: 55-11-3371-2500

Middle East & Africa
United Arab Emirates
Tel: 971-481-27800

Asia Pacific
Singapore
Tel: 65-6518-1800

If the products featured will be used in a potentially dangerous and/or hazardous process, your John Crane representative should be consulted prior to their selection and use. In the interest of continuous development, John Crane Companies reserve the right to alter designs and specifications without prior notice. It is dangerous to smoke while handling products made from PTFE. Old and new PTFE products must not be incinerated. ISO 9001 and ISO14001 Certified, details available on request.